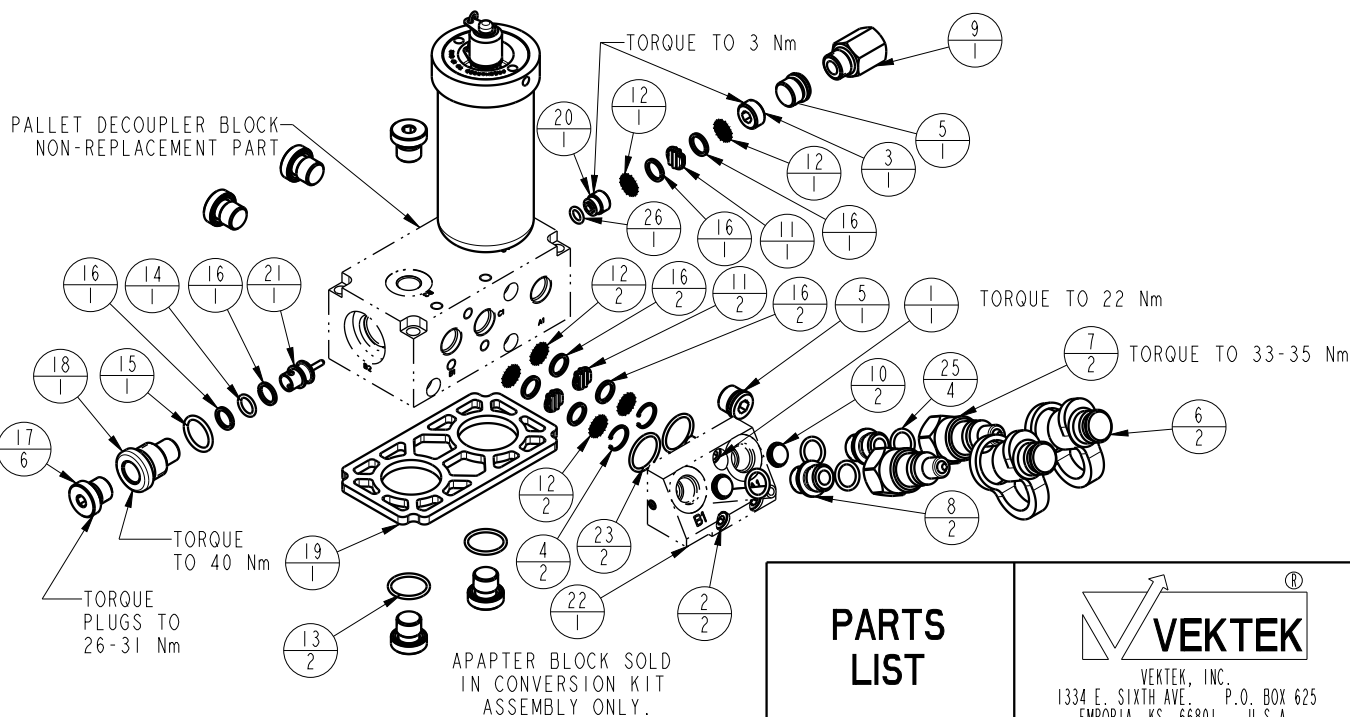


NO	QTY	PART NO	DESCRIPTION	FILTER KIT	SEAL KIT
1	1	21410063	S.H.C.S. 1/4-20 UNC X .50 LG.	NO	NO
2	2	21410066	S.H.C.S. 1/4-20 UNC X 1.25 LG.	NO	NO
3	1	21440014	SHSS, HOLLOW	NO	NO
4	2	23002013	RETAINING RING, INTERNAL, 13 MM	YES	NO
5	2	30601166	PLUG, SOCH, SAE 6	NO	NO
6	2	30719706	COVER, DUST, QD, SAE 6	NO	NO
7	2	30772766	COUPLING, QD, SAE 6, MALE	NO	NO
8	2	30871166	ASSY, ADAPTER, SAE 6, MALE	NO	NO
9	1	30871966	ADAPTER, ACC, SAE 6 - G1/4	NO	NO
10	2	31050001	FILTER SCREEN, SAE 6, 178 MICRON	NO	NO
11	3	31050011	FILTER, DISC, SAE 6, 25 MICRON	YES	NO
12	6	31050013	DIFFUSER, DISK, SAE 6	YES	NO
13	2	39000021	O-RING, (-018)	NO	YES
14	1	39000031	O-RING, (-012)	NO	YES
15	1	39000036	O-RING, (-908)	NO	YES
16	8	39054010	BU RING, (-012)	YES, QTY 6	YES, QTY 2
17	6	43068006	PLUG, PORT, HOLLOW HEX, G1/4	NO	NO
18	1	45600510	PLUG, PD, PISTON, 1/4 BSPP	NO	NO
19	1	45600511	SPACER, PD, DUAL, METRIC	NO	NO
20	1	70343792	VALVE, CHECK, SAE 4, 30 PSI	NO	NO
21	1	87033103	PISTON, AB, PILOT CHK.	NO	NO
22	1	95600000	KIT, CONVERSION, PD, SGL HANDED	NO	NO
23	2	39H51000	O-RING, (-018)	NO	YES
24	1	49011605	ASSY, ACC, 62 CC, 17 BAR	NO	NO
24	1	49011602	ASSY, ACC, 59 CC, 50 BAR	NO	NO
24	1	49011601	ASSY, ACC, 52 CC, 100 BAR	NO	NO
25	4	39000026	O-RING (INCLUDED WITH 30871166)	NO	YES
26	1	55250001	O-RING, CHECK VLV (INCLUDED WITH 70343792)	NO	YES
N/A	N/A	60560001	KIT, SEAL, PD, IH, DUAL	NOTED	N/A
N/A	N/A	62560007	KIT, FILTER, PD, DUAL, 25 MICRON	N/A	NOTED
N/A	N/A	62560008	KIT, TOOL, SERVICE, PD, CHK VLV & FILTER	N/A	N/A

NOTES:

1. APPLY LUBRICANT TO ALL SEALS PRIOR TO INSTALLATION
2. DO NOT USE SILICONE TYPE LUBRICANTS.
3. PD SERVICE TOOL KIT INCLUDES CHK VLV WRENCH (65600000) AND LONG 1/4" HEX KEY (65600001).



<p><b>PARTS LIST</b></p>	<p>VEKTEK, INC. 1334 E. SIXTH AVE. P.O. BOX 625 EMPORIA, KS. 66801 U.S.A.</p>	
	<p>ASSEMBLIES AFFECTED L5600543, 45600723, 45600724, 45600725, 45600726</p>	<p>PARTS LIST, ASSY, PD, IH, DUAL, EXT ACC</p> <hr/> <p>SIZE A <b>LPL5603</b> REV B</p>

B	3570	RELEASE	DLG	8-29-18
REV	IN ACCORDANCE WITH ECN	EFFECTIVE DATE	REVISED BY	DATE
DRW BY: DLG	<b>DRAWING STATUS: Released</b>			
DATE: 5/24/18	PRODUCTION APPROVED FOR RELEASED STATUS ONLY			